



New beginnings for Tissue Bank



On Monday 22 November 2010, staff and members of the community gathered to celebrate the blessing of the newly formed Middlemore Tissue Bank.

This new facility, which has come as a result of three years of hard work, is designed to store human tumour-related specimens, bone marrow and blood, in order to provide researchers with high quality specimens and data.

Those who spoke at the blessing, including Dr Stuart Ryan (General Manager, CCRep), Dr Samar Issa (Clinical Director of the Tissue Bank, Haematology) and Daphne Mason (Tissue Bank Curator, CCRep), reflected on the importance of having a Tissue Bank at the Middlemore site, whilst asserting “this is just the beginning”.

“This Tissue Bank, with your support and patients donating tumour samples, allows us to take the steps towards fighting disease,” says Dr Samar Issa.

“We’re excited about the future ahead of us and answering the question on everyone’s mind: ‘What is happening here?’”.

Curator, Daphne Mason, also looks forward to providing a world class facility. “The Tissue Bank aims to help researchers discover new tests and treatments and, at the end of the day, provide better patient care” she says.

Those involved in the project are very appreciative of all the support they have received from CMDHB and the community.



Tissue Bank Blessing – [L] to [R] Matua Te Hira, Dr Samar Issa, Whaea Taue, Daphne Mason, Jacqueline Case, Dr Hilary Blacklock, Sharita Meharry, Dr Stuart Ryan and Adina Halpern.

Beginning with CCRep, the Tissue Bank also relies on support from the Freemasons Roskill Foundation, the Leukaemia and Blood foundation and the South Auckland Health Foundation.

Currently the Tissue Bank is limited to tissue collected from Middlemore, but there is potential for extending to more DHBs in the future. The Tissue Bank is also optimistic they will have their first collection by Christmas, although it could take up to two years to gather a reasonable number of specimens for research.

We wish the Middlemore Tissue Bank good luck for the future and we are excited about what this signifies for research at the hospital.

Clinical Services Building (CSB) Construction underway

Stage 1 – Phase 1 of the new Clinical Services Building is underway, which includes the construction of a commercial kitchen and temporary facilities for inward goods and linen. This section of the building will be complete in Autumn 2011, at which time the above services will move to the LG Floor.

In Phase 2 you'll see construction of 14 operating theatres, a sterile supply unit, and facilities for support services (orderlies, cleaning, mail room, patient information services, clinical coding, waste and medical gas store and plant).

This will be complete by late 2013. On completion of Stage 1 the building will be occupied by:

Lower Ground: Non Clinical Support, Orderlies, Patient Information Services, Clinical Coding, Linen, Kitchen, Inwards Goods, Mail Room, Cleaning Services, Waste and Medical Gas Store.

Ground Floor: Assessment and Planning Unit

1st Floor: High Dependency Unit

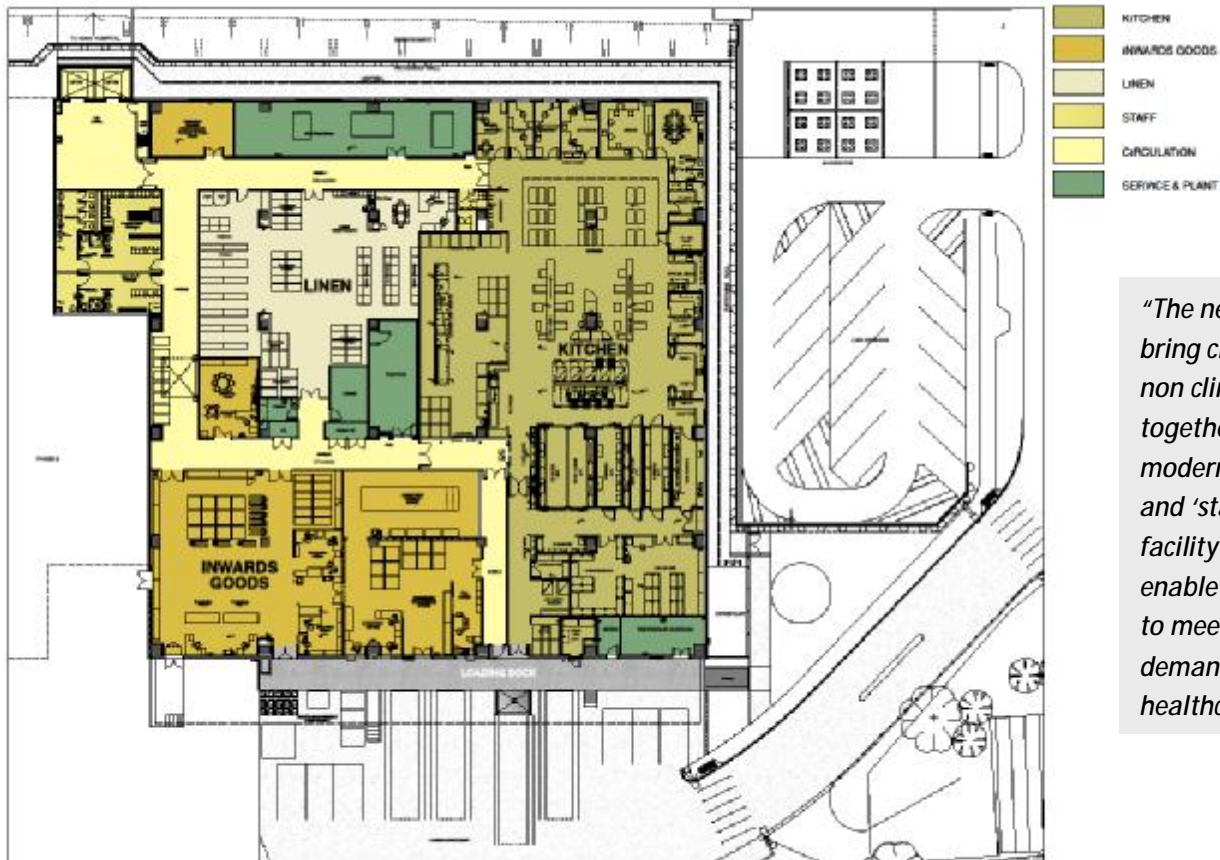
2nd Floor: Theatres

3rd Floor: Sterile Supply, Plant

Completion Stage 1 – Phase 1: Late 2011. Completion Stage 1 – Phase 2: Late 2013



Middlemore Hospital Clinical Services Building
Phase 1 South Elevation



Middlemore Hospital Clinical Services Building
Phase 1 Plan

"The new CSB will bring clinical and non clinical services together in a modern, spacious and 'state of the art' facility and will enable the CMDHB to meet the growing demands for healthcare services"

Construction update CSB

Over the coming weeks Watts & Hughes Construction will be:

- excavating or digging out the Lower Ground Floor
- putting up a retaining wall to stop the downward movement of soil, rock, or water.
- digging out a service trench to accommodate services such as air conditioning, gas, water, fire main, medical gas etc,
- plumbing and drainage.
- digging out a new access road

From late January 2011 you will start to see the building take shape, as the foundations are laid and the steel framework and walls start to go up.

From mid 2011 you'll start to see the fit-out of the LG Floor followed by the relocation of Inwards Goods, Kitchen and Linen (late 2011).

Many thanks to all of the staff working in the buildings that surround the construction zone. We realise that you have had to deal with varying degrees of noise and activity and we thank you for your patience.



Construction of piles



CSB Stage 1 - Phase 1 site to be excavated

Did you know ...

There are 80 truck movements per day. That's 400 trucks coming and going from the site during a working week.

A total of 35,000m³ of dirt will leave the site. That's enough dirt to fill 14 Olympic size swimming pools!

Energy Centre Annex nears completion

The Cooling Tower project is an upgrade of the existing Energy Centre Annex (ECA), which will increase its capacity to service the soon to be started Clinical Services Building (CSB). The ECA will house a new boiler and chiller for the production of hot and cold water for the purposes of running air conditioning systems. As part of the project a new bulk domestic water storage tank has been constructed along with some enabling works to facilitate the construction of CSB: Stage 1 – Phase 1.



The new Energy Centre Annex

Positive response to new Building

In early November 2010, the Groundsmen (Barry & Joe), Tinman Engineering (Shane, Mark & Hayden), the Maintenance Technicians (Steve, Denesh, Maurice, Neil, Peter & Reg) and our Painter, Bruce, moved from Building 19 to the newly established Building 53.

In contrast to their former home, one of Middlemore's original buildings, the new building offers large spacious work areas, with positive responses from all.

"It's a really good space, with good light and there's plenty of storage that we haven't had previously," says Greg from D&G Development.

Bruce, Middlemore's resident painter, also loves the change. "It's excellent to have a new building and a new facility," says Bruce. "Overall we're very happy."

Congratulations on the smooth move. We're glad everyone has settled in well.



Building 53 – just across from Tiaho Mai



Shane is photographed in his new workshop



Bruce the painter stocks up the shelves



Joe is happy with the new Groundsmen Shed

Parking at the Western Campus

If you're thinking about parking at the Western Campus, but haven't yet made the move, I suggest giving it a go.

Like many of you I was used to parking on the Middlemore Site and couldn't bring myself to park on the opposite side of the railway line, however after finding it more and more difficult to find a park and arriving at work stressed I decided to give the Western Campus a try.

I have to say I was pleasantly surprised. There were plenty of parks available in the multi-storey carpark – even when I arrived late one morning (around 9 am).

The walk across the bridge was also a lot quicker than I imagined and I arrived at work less grumpy and a bit fitter.

So long story short I will be parking here in the future and joining the other converts who are choosing a less stressful way to park.

What other people have to say:

"I've figured out it takes me less time to get to work by parking at the Western Campus – there is no more queuing on Hospital Road."

"I like the idea that I can park under cover in the shade." (multi-storey carpark)

"It's part of my morning exercise regime. I can feel the burn by walking up and down the steps to the railway bridge."

"It's less stressful parking at the Western Campus – I'm so pleased I don't have to turn up at work at 6 am to find a park on the Middlemore Site!"

CONSTRUCTION UPDATE: Level 3 of the Western Campus Carpark is now open with Level 4 opening in January 2011. Once the car park is complete work will resume on the temporary ground level carpark which will be sealed and marked.



Level 3 is now open



The ramps and stairs have been completed on Levels 3 and 4

MILESTONES 2010

December 2010



- Level 3 opens – Western Campus multi-storey carpark

November 2010



- Gate 2 partially closes to allow construction to begin for the new Clinical Services Building
- Building begins for Stage 1 – Phase 1: Clinical Services Building
- Building 53 opens – home to Groundsmen, Maintenance Technicians, Painter and Tinman Engineering.
- Clinical Pharmacy moves to Building 2
- The Tissue Bank opens in the Basement of the Edmund Hillary Building
- Level 2 of the Western Campus multi-storey carpark gets handed back

October 2010



- The northern AMC Staff Carpark becomes a construction zone for Ko Awatea
- Construction of Ko Awatea begins

September 2010



- Farewell ceremony to the Rainbow Corridor
- Demolition of buildings 15, 16, 17, 18 and half of the Rainbow Corridor
- Kidz First round-about is reconfigured
- The temporary ground level carpark opens - western campus

August 2010



- Official opening of the Edmund Hillary Building by Hon John Key
- The Linen Room moves to the Rainbow Corridor. Executive Management move to Level 5 Galbraith. Orderlies and Cleaners move to a portacom on the Northern side of the AMC carpark. Ward 4 moves to Ward 6 and Midwives move from the Western Campus to Lambie Drive
- The new double-laned ring road opens at the back of the Middlemore Site
- New AMC Public Lifts are up and running
- Home Health Care at Pukekohe Hospital opens new offices

July 2010



- Clinical Coding and Allied Health move to their new offices.
- The Mail Room and Spiritual Centre relocate to the old cardiac corridor (Building 7)
- RMO Building moves to the outside of Building 7
- Koropiko (Mental Health Services for Older People) officially opens its new ward and celebrates its new name.
- Additional monitoring rooms open in Emergency Care

June 2010



- New Bike Park opens at Middlemore Hospital
- New Staff Café Opens
- Ward 35 Plastics and the Gastroenterology Day Ward and Clinics open in the Edmund Hillary Building
- The new Ground floor link between the AMC and Edmund Hillary Building opens.

May 2010



- New link between AMC and Edmund Hillary Building OPENS on Level 1
- Upgrade complete – Module 4, Manukau SuperClinic
- Opening of new Haematology Day Ward and Clinics, Medical Short Stay, Koropiko and Allied Health inpatient services – Edmund Hillary Building

April 2010



- Opening of Assessment and Observation Unit
- New AMC staff lifts and lobbies open
- BioMed Bed Store opens – Edmund Hillary Building

March 2010



- Expansion complete for BreastScreen Counties Manukau

IT'S BEEN A BUSY AND EXCITING 2010. MERRY XMAS FROM THE TOWARDS 20/20 TEAM



THANKS FOR YOUR HELP AND SUPPORT DURING 2010

