

New Beginnings

A large crowd gathered for the Blessing and Opening of the Assessment and Observation Unit (AOU) – a 15 bed unit located next to Adult Short Stay at Middlemore Hospital

This temporary facility will primarily be used Monday to Friday to see medical patients who have been referred by a GP or Accident and Medical Clinic. Once treated, patients will be discharged home or transferred to an inpatient ward. Patients requiring urgent treatment will continue to be seen in Emergency Care (EC). Over the weekend it will function as an extended Adult Short Stay.

"The new Unit will add to the success of the '6 Hour Project' by improving patient flow through Emergency Care, reducing overcrowding and completely eliminating corridor patients," says Professor Gregor Coster," Chairman CMDHB. "It comes down to making sure our patients receive the best care in the most appropriate place and I'm delighted to report that from January – March 2010, 96% of patients coming through EC were seen within 6 hours. That's an amazing result and is testament to your commitment and support."



Janice Strickland, Associate Clinical Nurse Manager (ACNM) of AOU and Medical Short Stay cuts the ribbon



[L to R] Geraint Martin CEO CMDHB, Brad Healey GM Medicine and Acute Care, Janice Strickland, Associate Clinical Nurse Manager, Joanne Aickin, Charge Nurse Adult Short Stay, Alex Boeursma, Operations Manager EC, Mary Mcmanaway, Nurse Manager EC, Professor Coster Chairman CMDHB, Gill Cossey, GM Surgical and Ambulatory Care, Jeff Garrett, Clinical Director of Medicine, Vanessa Thornton, Clinical Director EC and Matt Fleming, Architect.

As for the future, planning is underway to develop a 42 bed Assessment and Planning Unit co-located close to the Emergency Department and the Radiology Suite in the soon to be built Clinical Services Building. At that time the AOU will be incorporated into a 38 bedded Adult Short Stay Unit within the EC Department.

The new AOU opened late Thursday 22 April 2010. Many thanks to everyone involved with the Project.

Contents:

- [Find out about the new CSB and the activities that need to take place prior to construction](#)
- [Saying goodbye to an icon – the Rainbow Corridor](#)
- [Completion and Blessing of the Edmund Hillary Building](#)
- [Update AMC Lifts and Links](#)
- [Extra clinics for Module 4 at the Manukau SuperClinic](#)
- [Pukekohe Hospital – part of the community](#)

Building for the future – NEW Clinical Services Building

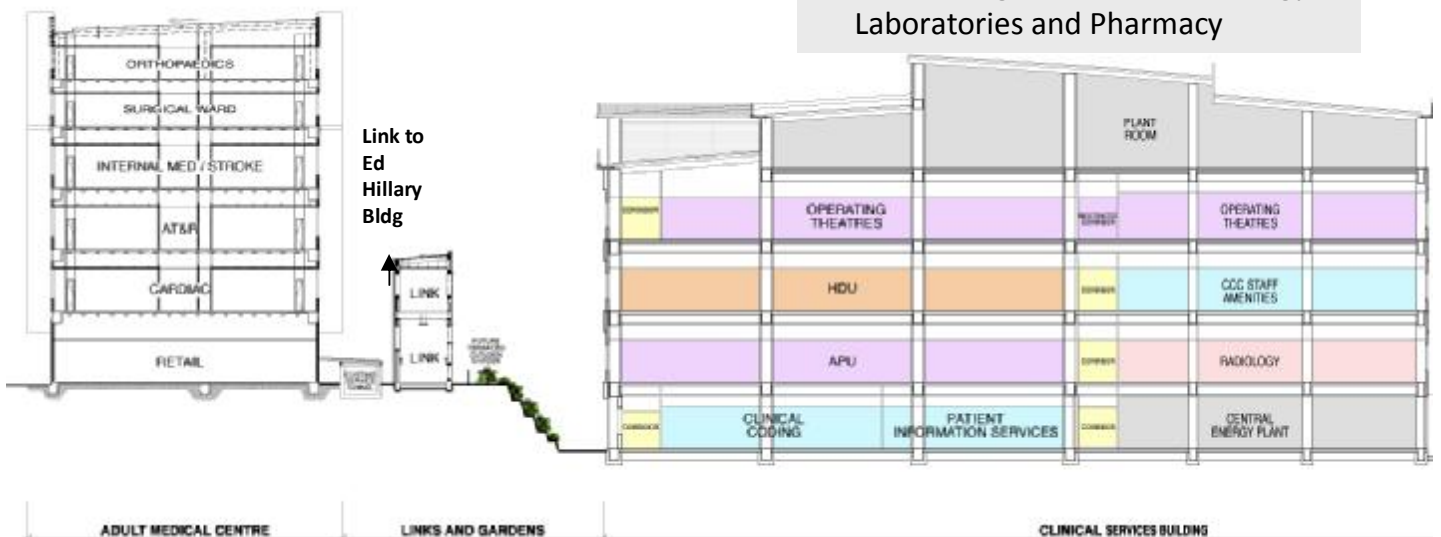


In November 2010 building works will commence for a new Clinical Services Building (CSB) on the Middlemore site.

This 'one of a kind' building will bring clinical and non clinical services together in a modern, spacious and 'state of the art' facility and will enable the CMDHB to meet the growing demands for healthcare services. New links from the CSB to our major buildings will also make it easier for staff, patients and visitors to travel around the Hospital.

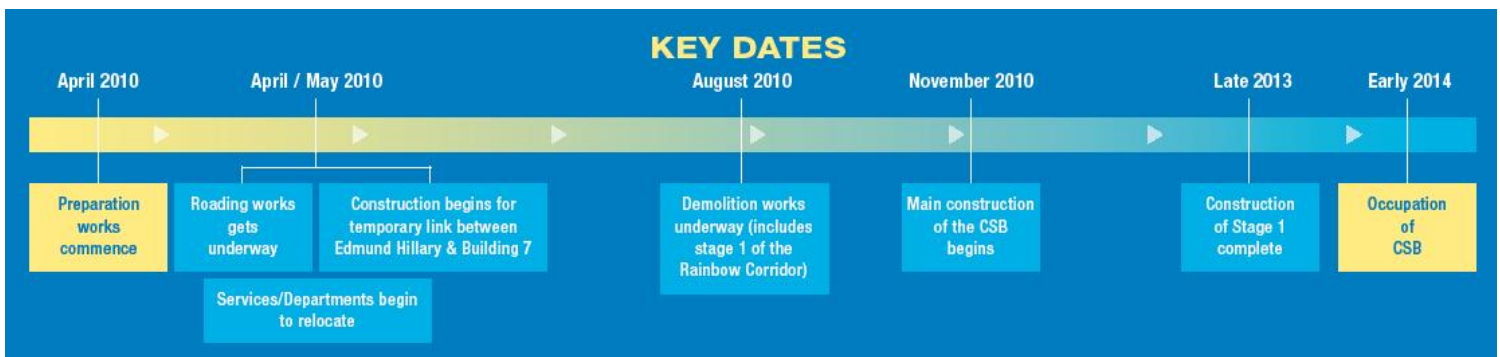
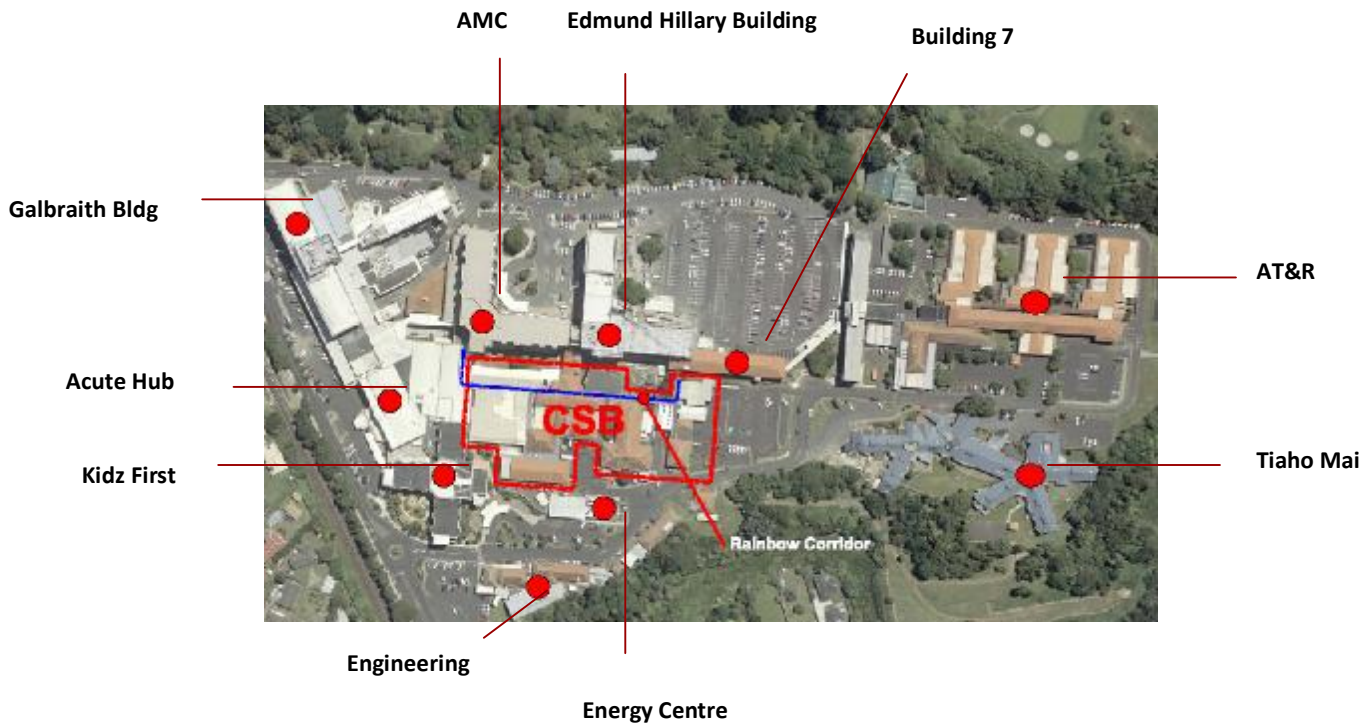
Project Overview

- 14 theatre operating suite
- TADU – Theatre Admissions and Discharge Unit
- Critical Care Complex – HDU
- Sterile Supply Unit (SSU)
- APU – Assessment & Planning Unit
- Support Services (kitchen, linen, inwards goods, patient information, clinical coding, orderlies, cleaners, mail and waste)
- Future Stage 2 includes Radiology, Laboratories and Pharmacy



A number of activities need to take place to prepare the CSB site for construction

- Refurbishment of Ward 22, Ward 25 and some rooms within Building 7. On completion Ward 22A will accommodate Clinical Coding and Ward 22 will accommodate Allied Health Support Services. Allied Health Outpatients (Physiotherapy, Occupational Therapy, Speech Language Therapy, Dietitians and Pulmonary Rehab) will move to Ward 25. Areas within Building 7 will be refurbished to accommodate the Spiritual Centre and Mail Room.
- The RMO Lounge will move to an area outside Building 30 and the Orderlies Portacom will move to the front of Building 7 – (on the Northern carpark, where the Bone Tumour Registry used to be).
- Construction gets underway for a temporary link between the Edmund Hillary Building and Building 7. When complete this link will replace the Rainbow Corridor.
- Construction gets underway for a new Engineering workshop between the old Mortuary Building and Tiaho Mai). This workshop will replace Building 19.
- Upgrade of the ring road at the back of Building 31. This will be turned into a two-way lane to allow access to and from the construction zone.
- Modifications of the road by the Energy Centre, Kidz First



Paving the way for the CSB

Preparation works for the new CSB is underway with Ward 22A one of the first areas to undergo refurbishment.

Once completed (early July 2010) Clinical Coding will move in.

Prior to the building works a small group gathered to bless the area and acknowledge all the patients, staff and visitors who had spent time here. It was a moving ceremony carried out by Kaumatua and Chaplains.

There is a lot of history in this ward and it was important to acknowledge the past before moving forward.



Staff gather for the Blessing of Ward 22A

Ward 22A used to be home to an AT&R Ward. This ward moved to the AMC in December 2009 (now known as Ward 5 AT&R)

Saying goodbye to an icon

In August 2010 demolition of the Rainbow Corridor will begin to make way for a new Clinical Services Building. This will take place in two stages with completion mid 2011.

The Rainbow Corridor has been part of our culture since 1991 and was painted by the Queen Elizabeth Arts Council as a way finder for parents to the Paediatric Acute Assessment Unit (then known as AAU) from the Emergency Dept.

Families were told to follow the "Rainbow", and the children had great fun trying to find "Where was Wally" peaking out from under some of the colours. It was a great improvement from the cold drab walls and made the trip to the Paediatric Unit more of an adventure.

In fact one child returning to the Hospital 5 years later could still remember where Wally was hiding.



Rainbow Corridor

The Rainbow Corridor has been one of the best directional systems we have had and numerous people have found their way by following the bright colours. It's also been a great place to stop and have a chat.

The good news is that discussions are underway to incorporate an aspect of the rainbow corridor into our future buildings. We will keep you posted.

Edmund Hillary Building

A significant milestone is taking place as we come to the completion of the Edmund Hillary Building (EHB). In June 2010 all levels will be occupied. That's two and a half years since construction began. Many thanks to everyone involved – it's been a real team effort



Laying the 'Mauri Stone' in January 2008

ON THE MOVE IN MAY 2010

5

Medical Short Stay moves from B Floor, Building 2 to Level 1, EHB

12

MHSOP (Mental Health Services for Older People) moves from Ward 22 to Level 5, EHB

17

Haematology Day Ward and Clinics move from Building 15 to Level 1, EHB

26

Allied Health Inpatient Service moves from the Rainbow Corridor to Ground Floor, EHB



February 08



May 09



April 08



October 09



September 08



March 10



Blessing of the Edmund Hillary Building (Stage 2)

A large group of staff, which included Professor Gregor Coster, Chairman CMDHB gathered for the Blessing of the Edmund Hillary Building (Stage 2).

This included Level 5: MHSOP (Mental Health Services for Older People) and the Plastics Ward. Level 2: Gastroenterology. Level 1: Medical Short Stay and Haematology Day Ward and Clinics and the Ground Floor: Allied Health and the Discharge Lounge.

The Blessing provided an opportunity to acknowledge the completion of the building and to thank everyone for their hard work.

This included the staff about to move into their new facilities. For these people it's been quite a journey to reach this point and there were smiles all round as staff looked around their new areas.

On behalf of the CMDHB Board and the Towards 20/20 Team we hope you enjoy your new premises.



The Kaumatua lead the way



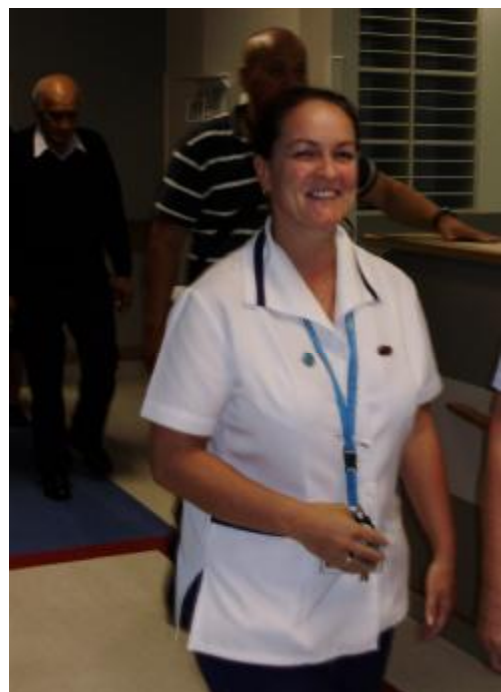
Nigel Naylor, Charge Nurse of Gastro Day Ward and Clinics



The Kaumatua and Chaplains gather for a final prayer



Many thanks to Gillian Cossey, GM Surgical and Ambulatory Care who spoke on behalf of the services moving in



Heather Lewis, Charge Nurse of Ward 21 - Plastics

Update new Adult Medical Centre (AMC) Lifts and Links



New AMC Staff Lifts



New Links

The new AMC staff lifts and lobbies are planned to be fully operational from Monday 26 April 2010. Work will then begin on converting the old AMC staff lifts into public lifts.

The new link on Level 1 between the AMC and Edmund Hillary Buildings will be up and running from mid May 2010. This link will predominantly be used to transport patients between the two buildings resulting in better separation of patient and public spaces, improved privacy and quicker access to departments. The link on the Ground floor (opening date to be confirmed) will be used by the general public.

Extra Clinics for Kidz First Outpatient Care, Manukau SuperClinic

Due to increased demands for Ambulatory and Community Care, Kidz First Outpatient Care at the Manukau SuperClinic is undergoing remodelling to convert office space to clinic space.

“We are excited to be able to provide an improved outpatient environment for children and their caregivers attending appointments,” says Carol Harris, Service Co-ordinator Kidz First Outpatient Care

“Our teams of medical, nursing and allied health staff are looking forward to completing assessments in the newly converted clinical rooms

“In addition to the redesigned clinic rooms the reception area has been adapted to provide an opportunity for improved linkages with the waiting room and improved patient flow.”

Carol says the team have also designed a shared work area to enable the multidisciplinary teams utilising the Module to complete clinical administration in a dedicated area.

Work on the Module commenced 15 March 2010 and is expected to be completed by the end of April 2010.

Kidz First Outpatient Care is currently temporarily located upstairs in the old Ophthalmology Module and are enjoying the view!

“The new clinic spaces will provide an improved environment for children and their caregivers.”

Pukekohe Hospital – part of the community



Pukekohe Hospital

Pukekohe Hospital has come a long way since it first opened its doors in 1955.

In those early years it functioned as an Obstetric Hospital with the addition of aged care in 1979.

These services continue today with the addition of Home Health Care, Public Nurses and a wide range of outpatient clinics.

“As soon as you drive into Pukekohe Hospital you are struck with the well kept grounds and gardens. It has the feel of the country, yet is minutes away from the town centre. There is also a strong sense of community - in fact when threatened with closure many years ago the locals fought hard to keep the Hospital open.

It is this community spirit that drives Pukekohe Hospital’s current model of care, which is centred on providing services and resources around the needs of the community.

“Our population is growing which places increased demands on our healthcare services,” says Carol Slade, Operations Manager Pukekohe Hospital.

“People need to have the tools, resources, knowledge and support to be able to look after themselves in the community.

“To help support this the Hospital will be setting up a resource centre where people can come for advice, try out equipment, come in for clinics and information sessions.”



Contact

Communications Coordinator

Janet Haley

TOWARDS 20/20

Counties Manukau District Health Board.

C/- Projects Office, Building 25

Private Bag 94052

South Auckland Mail Centre

Auckland

Ph: (09) 262-9500

Fax: (09) 270 9714

Mobile: 021 443 731

Email: haleyj@middlemore.co.nz

Web: www.cmdhb.org.nz

Towards 20/20 Web Site

Access from 'Projects' website on SouthNet or under 'P' in the Services Directory.

The Towards 20/20 web site has been designed to inform staff about the modernisation and redevelopment projects occurring across the CMDHB sites.

You'll find background information and regular updates on the various projects, along with updated photographs of construction activities, floor plans, copies of Towards 20/20 NEWS and much more.

Farewell to Sandra James, EA to Greg Simpson

The Projects, Facilities and Engineering staff would like to say a fond farewell to Sandra James, EA to Greg Simpson, GM Facilities who will be leaving us to work for Non Clinical Support Services.

Sandra has been a huge asset to the team and is a fantastic source of knowledge.

Nothing is a problem and Sandra is more than happy to go that extra mile when required.

We will all miss her fabulous sense of humour and her sunny disposition.

From all of the team we wish her well on her next adventure.

Greg Simpson, GM Facilities



Sandra James

If you have any suggestions or story ideas for the Towards 20/20 newsletter or if you would like to hear about a particular Project please get in touch with Janet Haley (contact details above)